



STEREOVISION
PRODUCCIONES

40 PRESETS LOOK "CINEMA SUITE 2.0" THE STYLE MAGIC BULLET

Designed for : *caminstereo*

Version 2.0



ORIGINAL

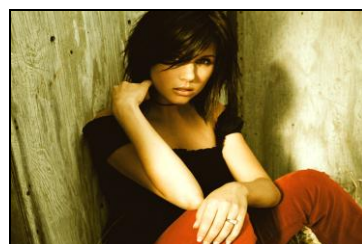
!Update! 27/03/2008



ALPHA NEGATIVE



AMERICAN HORSE



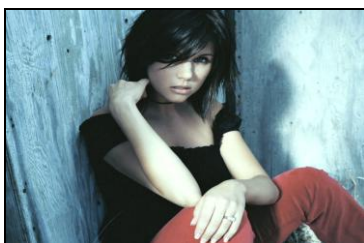
BASIC WARM



BASIC WARM MAX



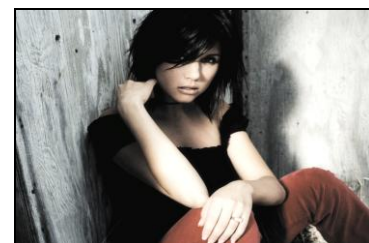
BASIC WHITE DIFUSION



BERLIN



BLACK AND WHITE CRUNCH



BLEACH BYPASS



BRONZE



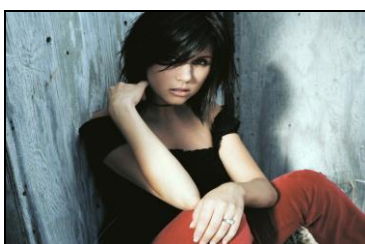
BUFFALO



CARTOON



COLOR REVERSAL



COOLISH



CURAHEE



DAILY



DREAM LOOK



GOLD CRUNCH



ICE



LEMON



MARINE



MARACUYA



MEDIUM



MEXICALI



NEO



NIGHT TIME



OHIO



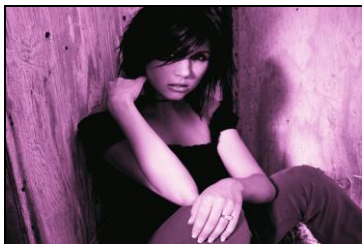
PALE OLIVE



PASTEL LOW CONTRAST



POLAR



PURPLE



REMEMBER



SEPIA RED



SOFT COLOR



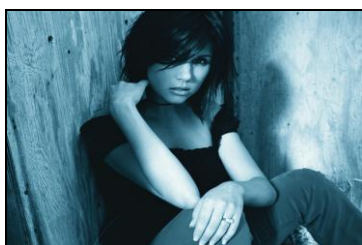
SOFT LIGHT



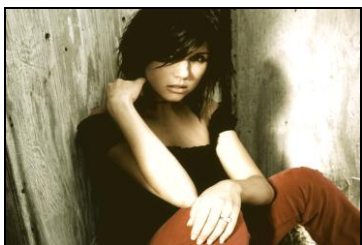
SUNSET



SUPER NIGHT SHOT



TINT STRONG BLUE



TROPICO WASH

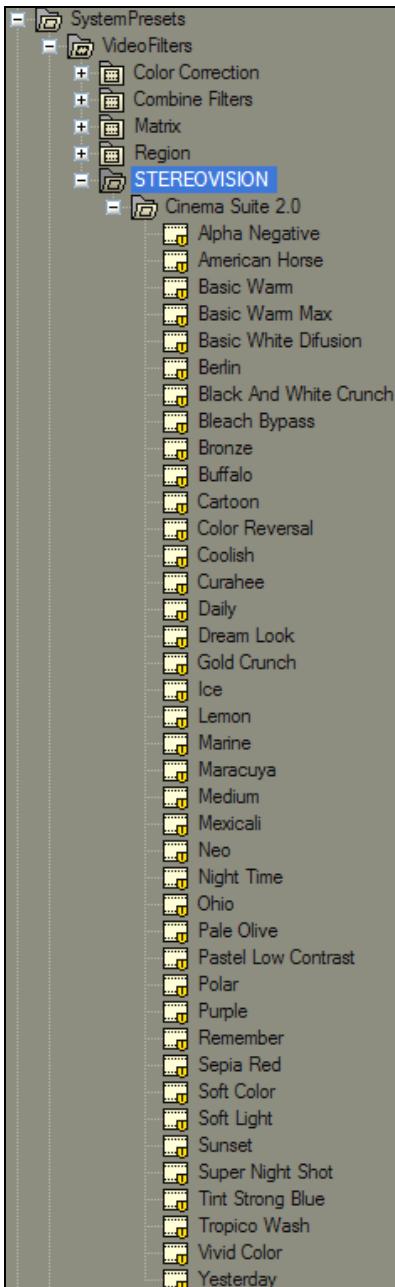
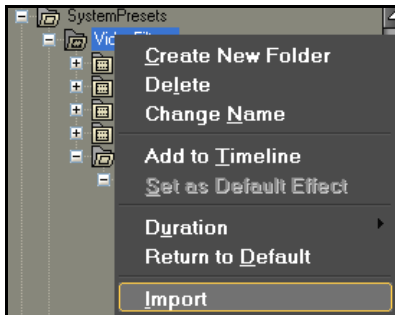


VIVID COLOR



YESTERDAY

INSTRUCTIONS



In the Palette de Effects... select **Systems Presets/Video Filters/Import...** and care the portfolio presets "STEREOVISION" for the version of EDIUS that you/they are using... for they can choose it among the Portfolio "EDIUS 3.xx" or "EDIUS 4.xx"; alone recommendation chooses the corresponding portfolio they don't choose another portfolio that is not since for its same version the color space it is very different among these two versions of EDIUS.

Note: If they still have cared the previous portfolio of goods that I gave them because eliminates it their palette's of goods portfolio presets and insert this new portfolio of goods of now (up-to-date 27/03/2008).

DETAIL OF UPGRADE

CINEMA SUITE 2.0 (27/03/2008)

* It has been corrected all the defects of color distribution that he/she had the 27 previous presets that it is the a lot of excess of the "limit of legalization of colors" that it shows us in the Vectorscope/Waveform of EDIUS, for that that this the 40 new presets look has been strictly watched over and visualized for the Vectorscope/Waveform and clear this also in the video monitors "SD" and "HD" for that that this time the new 40 presets of "**Cinema Suite 2.0**" sample a bigger quality that the previous presets, and also sample a pleasant color texture showing a high sensibility of color clarity on the fixed images (RGB) uncompressed and with a superior result on the video clips based on cameras " 3 CCD" professional or broadcast of superior preference on clips with color sampling 4:2:2.

* 13 new presets has been added: Alpha Negative, American Horse, Cartoon, Daily, Maracuya, Medium, Purple, Polar, Sepia Red, Sunset, Super Night Shot, Vivid Color , Yesterday.

Nota: in the calibration of the 40 presets it has not been necessary the activation of "safe color" since this time it is an exception that is the one of generating an unique color texture and not the one of correcting a color of a clip for what has been strictly balanced with "White Balance" most of presets with the purpose to achieve the wanted texture and to attenuate the invasions of color alteration in NSTC or PAL, respecting this way the one "limits of color" legalization that shows us in the Waveform and Vectorscope... **all the presets is custom for what guarantees the immediate extra correction that you can be made with urgency.**

ABOUT CINEMA SUITE 2.0

"**Cinema Suite 2.0**" are a denomination that was assigned by **STEREOVISION PRODUCTIONS** for the presets look that are frequently used in EDIUS in the daily work of he/she carries out the Peruvian producer; this Suite amasses the big very popular presets that have "**Magic Bullet Look Suite 2.0**" **these they were assimilated with great fidelity by caminostereo that are:** Basic Warm, Basic Warm Max, Basic White Difusion, Berlin, Black And White Crunch, Bronze, Coolish, Color Reversal, Curahee, Gold Crunch, Mexicali, Neo, Night Time, Pale Olive, Pastel Low Contrast, Bleach Bypass, Buffalo, Dream Look, Ohio, Tint Strong Blue y Tropico Wash...

It also contains creations characteristic of caminostereo that are: Alpha Negative, American Horse, Cartoon, Daily, Ice, Lemon, Marine, Maracuya, Medium, Purple, Polar, Remember, Sepia Red, Soft Color, Soft Light, Sunset, Super Night Shot, Vivid Color , Yesterday.



STEREOVISION
PRODUCCIONES